

Ret(Phospho Tyr1015) Polyclonal Antibody

Description

Product type	Primary Antibody
Code	BT-AP13669
Host	Rabbit
Isotype	IgG
Size	20ul, 50ul, 100ul
Immunogen	The antiserum was produced against synthesized peptide derived from human Ret around the phosphorylation site of Tyr1015. AA range:991-1040
Mol wt	124319
Species reactivity	Human, Mouse, Rat, Monkey
Clonality	Polyclonal
Recommended application	WB, ELISA
Concentration	1 mg/ml
Full name	Proto-oncogene tyrosine-protein kinase receptor Ret
Synonyms	Proto-oncogene tyrosine-protein kinase receptor Ret; RET; CDHF12; CDHR16; PTC; RET51; Proto-oncogene tyrosine-protein kinase receptor Ret; Cadherin family member 12; Proto-oncogene c-Ret

This product is for research use only, not for use in human, therapeutic or diagnostic procedure.

Background

This gene, a member of the cadherin superfamily, encodes one of the receptor tyrosine kinases, which are cell-surface molecules that transduce signals for cell growth and differentiation. This gene plays a crucial role in neural crest development, and it can undergo oncogenic activation in vivo and in vitro by cytogenetic rearrangement. Mutations in this gene are associated with the disorders multiple endocrine neoplasia, type IIA, multiple endocrine neoplasia, type IIB, Hirschsprung disease, and medullary thyroid carcinoma. Two transcript variants encoding different isoforms have been found for this gene. Additional transcript variants have been described but their biological validity has not been confirmed.

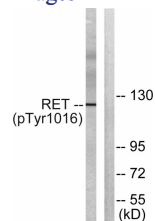
Recommended Dilution

WB: 1: 500 - 1: 2000

ELISA: 1: 5000

Not yet tested in other applications.

Images



Western blot analysis of lysates from COS7 cells treated with EGF 200ng/ml 30', using Ret (Phospho-Tyr1015) Antibody. The lane on the right is blocked with the phospho peptide.

Storage

-20°C for 1 year