

ZFP1 Rabbit Polyclonal Antibody

Description

Product type	Primary Antibody
Code	BT-AP13672
Host	Rabbit
Isotype	IgG
Size	20ul, 50ul, 100ul
Immunogen	Synthesized peptide derived from human ZFP1
Mol wt	44770
Species reactivity	Human, Mouse
Clonality	Polyclonal
Recommended application	WB
Concentration	1 mg/ml
Full name	ZFP1
Synonyms	ZFP1

This product is for research use only, not for use in human, therapeutic or diagnostic procedure.

Background

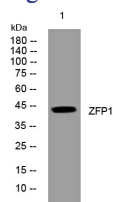
This gene belongs to the zinc finger protein family. Some members of this family bind to DNA by zinc-mediated secondary structures called zinc fingers| and are involved in transcriptional regulation. Alternative splicing results in multiple transcript variants encoding different isoforms.

Recommended Dilution

WB: 1: 500 - 1: 2000

Not yet tested in other applications.

Images



Western blot analysis of lysates from MCF-7 cells, primary antibody was diluted at 1:1000, 4°C overnight

Storage

-20°C for 1 year

501 Changsheng S Rd, Nanhu Dist, Jiaxing, Zhejiang, China

Tel: 86 21 31007137 | E-mail: save@bt-laboratory.com | www.bt-laboratory.com