

RFA4 Polyclonal Antibody

Description

Product type	Primary Antibody
Code	BT-AP13678
Host	Rabbit
Isotype	IgG
Size	20ul, 50ul, 100ul
Immunogen	Synthesized peptide derived from part region of human protein
Mol wt	N/A
Species reactivity	Human, Rat, Mouse
Clonality	Polyclonal
Recommended application	WB, ELISA
Concentration	1 mg/ml
Full name	Replication protein A 30 kDa subunit
Synonyms	Replication protein A 30 kDa subunit ;RP-A p30;Replication factor A protein 4;RF-A protein 4

This product is for research use only, not for use in human, therapeutic or diagnostic procedure.

Background

This gene encodes a single-stranded DNA-binding protein that is the 30-kDa subunit of the replication protein A complex. Replication protein A is an essential factor for DNA double-strand break repair and cell cycle checkpoint activation. The encoded protein localizes to DNA repair foci and may be involved in the cellular DNA damage response. This protein may also play a role in inhibiting viral replication.

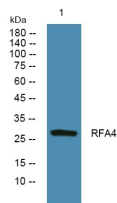
Recommended Dilution

WB: 1: 500 - 1: 2000

ELISA: 1: 5000 - 1: 20000

Not yet tested in other applications.

Images



Western blot analysis of lysates from K562 cells, primary antibody was diluted at 1:1000, 4°C overnight

Storage

-20°C for 1 year