

## RFP-Tag Polyclonal Antibody

### Description

Product type	Primary Antibody
Code	BT-AP13686
Host	Mouse
Isotype	IgG
Size	20ul, 50ul, 100ul
Immunogen	Recombinant Protein of RFP-Tag
Mol wt	N/A
Species reactivity	Species independent
Clonality	Polyclonal
Recommended application	WB
Concentration	N/A
Full name	N/A
Synonyms	N/A

This product is for research use only, not for use in human, therapeutic or diagnostic procedure.

### Background

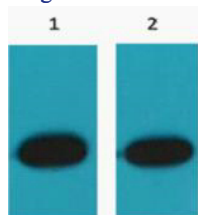
Red Fluorescent Protein (RFP) is isolated from sea anemone (*Discosoma* sp), and commonly used as a molecular tag to study protein localization, reporter gene expression, and protein-protein interactions. Although it exists as a homotetramer, monomeric variants have been constructed for use in various applications.

### Recommended Dilution

WB: 1: 2000 - 1: 5000

Not yet tested in other applications.

### Images



Western blot analysis of RFP Recombinant protein, diluted at 1:5000;1:20000. Secondary antibody was diluted at 1:20000

### Storage

-20°C for 1 year

501 Changsheng S Rd, Nanhu Dist, Jiaxing, Zhejiang, China

Tel: 86 21 31007137 | E-mail: [save@bt-laboratory.com](mailto:save@bt-laboratory.com) | [www.bt-laboratory.com](http://www.bt-laboratory.com)