

## ZFY27 Rabbit Polyclonal Antibody

### Description

Product type	Primary Antibody
Code	BT-AP13689
Host	Rabbit
Isotype	IgG
Size	20ul, 50ul, 100ul
Immunogen	Synthesized peptide derived from human ZFY27
Mol wt	45210
Species reactivity	Human, Mouse, Rat
Clonality	Polyclonal
Recommended application	WB
Concentration	1 mg/ml
Full name	ZFY27
Synonyms	ZFY27

This product is for research use only, not for use in human, therapeutic or diagnostic procedure.

### Background

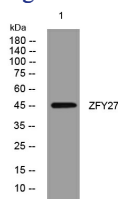
This gene encodes a protein with several transmembrane domains| a Rab11-binding domain and a lipid-binding FYVE finger domain. The encoded protein appears to promote neurite formation. A mutation in this gene has been reported to be associated with hereditary spastic paraplegia| however the pathogenicity of the mutation| which may simply represent a polymorphism| is unclear.

### Recommended Dilution

WB: 1: 500 - 1: 2000

Not yet tested in other applications.

### Images



Western blot analysis of lysates from KB cells, primary antibody was diluted at 1:1000, 4°C overnight

### Storage

-20°C for 1 year

501 Changsheng S Rd, Nanhu Dist, Jiaxing, Zhejiang, China

Tel: 86 21 31007137 | E-mail: [save@bt-laboratory.com](mailto:save@bt-laboratory.com) | [www.bt-laboratory.com](http://www.bt-laboratory.com)