

RGPD2/3/4/6/8 Polyclonal Antibody

Description

Product type	Primary Antibody
Code	BT-AP13705
Host	Rabbit
Isotype	IgG
Size	20ul, 50ul, 100ul
Immunogen	The antiserum was produced against synthesized peptide derived from human RGPD2/3/4/6/8. AA range:577-626
Mol wt	84565;198924;198196;198394;112325
Species reactivity	Human, Rat, Mouse
Clonality	Polyclonal
Recommended application	WB, ELISA
Concentration	1 mg/ml
Full name	RANBP2-like and GRIP domain-containing protein 8
Synonyms	RANBP2-like and GRIP domain-containing protein 8

This product is for research use only, not for use in human, therapeutic or diagnostic procedure.

Background

The sequence shown here is derived from an Ensembl automatic analysis pipeline and should be considered as preliminary data.,miscellaneous:One of the 8 copies of RANBP2 clustered close to the centromere of chromosome 2.,miscellaneous:One of the 8 copies of RANBP2 clustered close to the chromosome 2 centromere.,Contains 1 GRIP domain.,Contains 2 RanBD1 domains.,Contains 2 TPR repeats.,Contains 3 TPR repeats.,tissue specificity:Expressed in testis.,

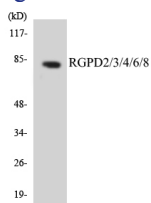
Recommended Dilution

WB: 1: 500 - 1: 2000

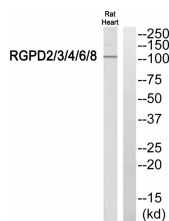
ELISA: 1: 40000

Not yet tested in other applications.

Images



Western blot analysis of RGPD2/3/4/6/8 Antibody. The lane on the right is blocked with the RGPD2/3/4/6/8 peptide.



Western blot analysis of the lysates from Jurkat cells using RGPD2/3/4/6/8 antibody.

Storage

-20°C for 1 year

501 Changsheng S Rd, Nanhu Dist, Jiaxing, Zhejiang, China

Tel: 86 21 31007137 | E-mail: save@bt-laboratory.com | www.bt-laboratory.com