

ZIM2 Rabbit Polyclonal Antibody

Description

Product type	Primary Antibody
Code	BT-AP13710
Host	Rabbit
Isotype	IgG
Size	20ul, 50ul, 100ul
Immunogen	Synthesized peptide derived from human ZIM2
Mol wt	57970
Species reactivity	Human, Rat, Mouse
Clonality	Polyclonal
Recommended application	WB
Concentration	1 mg/ml
Full name	ZIM2
Synonyms	ZIM2

This product is for research use only, not for use in human, therapeutic or diagnostic procedure.

Background

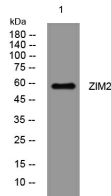
In human| ZIM2 and PEG3 (GeneID:5178) are two distinct genes that share a set of 5' exons and have a common promoter| and both genes are paternally expressed. Alternative splicing events connect the shared exons either with the remaining 4 exons unique to ZIM2| or with the remaining 2 exons unique to PEG3. This is in contrast to mouse and cow| where ZIM2 and PEG3 genes do not share exons in common| and the imprinting status of ZIM2 is also not conserved amongst mammals. Additional 5' alternatively spliced transcripts encoding the same protein have been found for the human ZIM2 gene.

Recommended Dilution

WB: 1: 500 - 1: 2000

Not yet tested in other applications.

Images



Western blot analysis of lysates from HeLa cells, primary antibody was diluted at 1:1000, 4°C overnight

Storage

-20°C for 1 year