

## Rho GDI alpha(Phospho Ser174) Polyclonal Antibody

### Description

<b>Product type</b>	Primary Antibody
<b>Code</b>	BT-AP13740
<b>Host</b>	Rabbit
<b>Isotype</b>	IgG
<b>Size</b>	20ul, 50ul, 100ul
<b>Immunogen</b>	The antiserum was produced against synthesized peptide derived from human ARHGDI A around the phosphorylation site of Ser174. AA range:140-189
<b>Mol wt</b>	23207
<b>Species reactivity</b>	Human, Mouse, Rat
<b>Clonality</b>	Polyclonal
<b>Recommended application</b>	WB, IHC-p, IF, ELISA
<b>Concentration</b>	1 mg/ml
<b>Full name</b>	Rho GDP-dissociation inhibitor 1
<b>Synonyms</b>	Rho GDP-dissociation inhibitor 1; ARHGDI A; GDIA1; Rho GDP-dissociation inhibitor 1; Rho GDI 1; Rho-GDI alpha

This product is for research use only, not for use in human, therapeutic or diagnostic procedure.

### Background

This gene encodes a protein that plays a key role in the regulation of signaling through Rho GTPases. The encoded protein inhibits the disassociation of Rho family members from GDP (guanine diphosphate), thereby maintaining these factors in an inactive state. Activity of this protein is important in a variety of cellular processes, and expression of this gene may be altered in tumors. Mutations in this gene have been found in individuals with nephrotic syndrome, type 8. Alternate splicing results in multiple transcript variants.

### Recommended Dilution

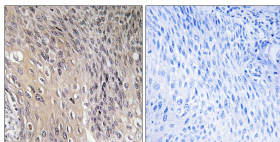
WB: 1: 500 - 1: 2000

IHC-p: 1: 100 - 1: 300

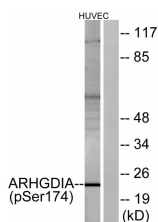
ELISA: 1: 20000

Not yet tested in other applications.

### Images



Immunohistochemistry analysis of paraffin-embedded human cervix carcinoma, using ARHGDI A (Phospho-Ser174) Antibody. The picture on the right is blocked with the phospho peptide.



Western blot analysis of lysates from HUVEC cells treated with EGF 200ng/ml 30', using ARHGDI A (Phospho-Ser174) Antibody. The lane on the right is blocked with the phospho peptide.

## Storage

-20°C for 1 year

501 Changsheng S Rd, Nanhu Dist, Jiaxing, Zhejiang, China

Tel: 86 21 31007137 | E-mail: [save@bt-laboratory.com](mailto:save@bt-laboratory.com) | [www.bt-laboratory.com](http://www.bt-laboratory.com)