

RHXF1 Polyclonal Antibody

Description

| | |
|--------------------------------|--|
| Product type | Primary Antibody |
| Code | BT-AP13756 |
| Host | Rabbit |
| Isotype | IgG |
| Size | 20ul, 50ul, 100ul |
| Immunogen | Synthesized peptide derived from human protein . at AA range: 110-190 |
| Mol wt | N/A |
| Species reactivity | Human, Rat, Mouse |
| Clonality | Polyclonal |
| Recommended application | WB, ELISA |
| Concentration | 1 mg/ml |
| Full name | Rhox homeobox family member 1 |
| Synonyms | Rhox homeobox family member 1 ;Ovary-, testis- and epididymis-expressed gene protein;Paired-like homeobox protein PEPP-1 |

This product is for research use only, not for use in human, therapeutic or diagnostic procedure.

Background

This gene is a member of the PEPP subfamily of paired-like homeobox genes. The gene may be regulated by androgens and epigenetic mechanisms. The encoded nuclear protein is likely a transcription factor that may play a role in human reproduction.

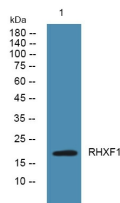
Recommended Dilution

WB: 1: 500 - 1: 2000

ELISA: 1: 5000 - 1: 20000

Not yet tested in other applications.

Images



Western blot analysis of lysates from Jarkat cells, primary antibody was diluted at 1:1000, 4°C overnight

Storage

-20°C for 1 year