

## RHXF2 Polyclonal Antibody

### Description

Product type	Primary Antibody
Code	BT-AP13757
Host	Rabbit
Isotype	IgG
Size	20ul, 50ul, 100ul
Immunogen	Synthesized peptide derived from human protein . at AA range: 50-130
Mol wt	N/A
Species reactivity	Human, Rat, Mouse
Clonality	Polyclonal
Recommended application	WB, ELISA
Concentration	1 mg/ml
Full name	Rhox homeobox family member 2
Synonyms	Rhox homeobox family member 2 ;Paired-like homeobox protein PEPP-2;Testis homeobox gene 1

**This product is for research use only, not for use in human, therapeutic or diagnostic procedure.**

### Background

This gene, which encodes a transcriptional repressor, is one of two paralogous X-linked homeobox-containing genes and is highly expressed in a variety of cancers. In addition, the encoded protein associates with the cell membrane and with microtubules, and is concentrated at the leading edge of migratory cells.

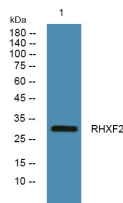
### Recommended Dilution

WB: 1: 500 - 1: 2000

ELISA: 1: 5000 - 1: 20000

Not yet tested in other applications.

### Images



Western blot analysis of lysates from A431 cells, primary antibody was diluted at 1:1000, 4°C overnight

### Storage

-20°C for 1 year