

RIP2(Phospho Ser176) Polyclonal Antibody

Description

Product type	Primary Antibody
Code	BT-AP13816
Host	Rabbit
Isotype	IgG
Size	20ul, 50ul, 100ul
Immunogen	The antiserum was produced against synthesized peptide derived from human RIPK2 around the phosphorylation site of Ser176. AA range:146-195
Mol wt	61195
Species reactivity	Human, Mouse
Clonality	Polyclonal
Recommended application	WB, IHC-p, IF, ELISA
Concentration	1 mg/ml
Full name	Receptor-interacting serine/threonine-protein kinase 2
Synonyms	Receptor-interacting serine/threonine-protein kinase 2; RIPK2; CARDIAK; RICK; RIP2; Receptor-interacting serine/threonine-protein kinase 2; CARD-containing interleukin-1 beta-converting enzyme-associated kinase; CARD-containing IL-1 beta ICE-kinase; RIP-like-interacting CLARP kinase; Receptor-in

This product is for research use only, not for use in human, therapeutic or diagnostic procedure.

Background

This gene encodes a member of the receptor-interacting protein (RIP) family of serine/threonine protein kinases. The encoded protein contains a C-terminal caspase activation and recruitment domain (CARD), and is a component of signaling complexes in both the innate and adaptive immune pathways. It is a potent activator of NF-kappaB and inducer of apoptosis in response to various stimuli.

Recommended Dilution

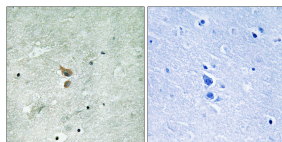
WB: 1: 500 - 1: 2000

IHC-p: 1: 100 - 1: 300

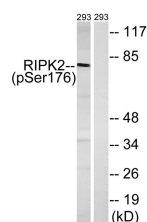
ELISA: 1: 40000

Not yet tested in other applications.

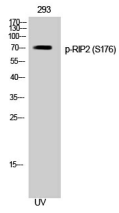
Images



Immunohistochemistry analysis of paraffin-embedded human brain, using RIPK2 (Phospho-Ser176) Antibody. The picture on the right is blocked with the phospho peptide.



Western Blot analysis of 293 cells using Phospho-RIP2 (S176) Polyclonal Antibody



Western blot analysis of lysates from 293 cells treated with UV 15', using RIPK2 (Phospho-Ser176) Antibody. The lane on the right is blocked with the phospho peptide.

Storage

-20°C for 1 year

501 Changsheng S Rd, Nanhu Dist, Jiaxing, Zhejiang, China

Tel: 86 21 31007137 | E-mail: save@bt-laboratory.com | www.bt-laboratory.com