

## RP25L Polyclonal Antibody

### Description

Product type	Primary Antibody
Code	BT-AP13891
Host	Rabbit
Isotype	IgG
Size	20ul, 50ul, 100ul
Immunogen	Synthesized peptide derived from human protein . at AA range: 100-180
Mol wt	N/A
Species reactivity	Human, Mouse
Clonality	Polyclonal
Recommended application	WB, ELISA
Concentration	1 mg/ml
Full name	Ribonuclease P protein subunit p25-like protein
Synonyms	Ribonuclease P protein subunit p25-like protein ;RNase P protein subunit-like p25;Rpp25-like protein

**This product is for research use only, not for use in human, therapeutic or diagnostic procedure.**

### Background

This gene encodes a protein that appears to belong to a family of evolutionarily related proteins (DUF78), that may share one or more domains in common. Members of this family are small archaeobacterial proteins with no known function. Alternative splicing has been observed at this locus and two variants, both encoding the same protein, have been identified.

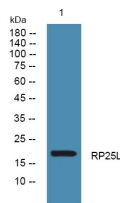
### Recommended Dilution

WB: 1: 500 - 1: 2000

ELISA: 1: 5000 - 1: 20000

Not yet tested in other applications.

### Images



Western blot analysis of lysates from U2OS cells, primary antibody was diluted at 1:1000, 4°C overnight

### Storage

-20°C for 1 year