

RPA14 Polyclonal Antibody

Description

Product type	Primary Antibody
Code	BT-AP13896
Host	Rabbit
Isotype	IgG
Size	20ul, 50ul, 100ul
Immunogen	Synthetic peptide from human protein at AA range: 30-80
Mol wt	N/A
Species reactivity	Human, Mouse
Clonality	Polyclonal
Recommended application	WB, ELISA
Concentration	1 mg/ml
Full name	Replication protein A 14 kDa subunit
Synonyms	Replication protein A 14 kDa subunit ;RP-A p14;Replication factor A protein 3;RF-A protein 3; Replication protein A 14 kDa subunit; RP-A p14; Replication factor A protein 3; RF-A protein 3

This product is for research use only, not for use in human, therapeutic or diagnostic procedure.

Background

Required for DNA recombination, repair and replication. The activity of RP-A is mediated by single-stranded DNA binding and protein interactions.,subunit:Heterotrimer of 70, 32 and 14 kDa chains. The DNA-binding activity may reside exclusively on the 70 kDa subunit. Interacts with RPA4.,

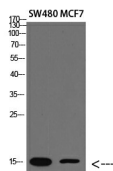
Recommended Dilution

WB: 1: 500 - 1: 2000

ELISA: 1: 10000 - 1: 20000

Not yet tested in other applications.

Images



Western blot analysis of lysate, antibody was diluted at 2000. Secondary antibody was diluted at 1:20000

Storage

-20°C for 1 year