

RPA43 Polyclonal Antibody

Description

Product type	Primary Antibody
Code	BT-AP13899
Host	Rabbit
Isotype	IgG
Size	20ul, 50ul, 100ul
Immunogen	Synthesized peptide derived from part region of human protein
Mol wt	N/A
Species reactivity	Human, Rat, Mouse
Clonality	Polyclonal
Recommended application	WB, ELISA
Concentration	1 mg/ml
Full name	DNA-directed RNA polymerase I subunit RPA43
Synonyms	DNA-directed RNA polymerase I subunit RPA43 ; Twist neighbor protein

This product is for research use only, not for use in human, therapeutic or diagnostic procedure.

Background

DNA-dependent RNA polymerase catalyzes the transcription of DNA into RNA using the four ribonucleoside triphosphates as substrates. Component of RNA polymerase I which synthesizes ribosomal RNA precursors. Through its association with RRN3/TIF-IA may be involved in recruitment of Pol I to rDNA promoters. Belongs to the eukaryotic RPA43 RNA polymerase subunit family. subunit: Component of the RNA polymerase I (Pol I) complex consisting of at least 13 subunits (By similarity). Interacts with RRN3/TIF-IA. tissue specificity: Widely expressed. Expressed in all fetal and adult tissues tested, with highest expression in fetal lung, liver, and kidney, and low expression in all adult tissues.

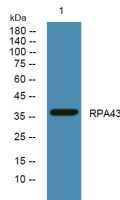
Recommended Dilution

WB: 1: 500 - 1: 2000

ELISA: 1: 5000 - 1: 20000

Not yet tested in other applications.

Images



Western blot analysis of lysates from U2OS cells, primary antibody was diluted at 1:1000, 4°C overnight

Storage

-20°C for 1 year