

RPAB3 Polyclonal Antibody

Description

Product type	Primary Antibody
Code	BT-AP13901
Host	Rabbit
Isotype	IgG
Size	20ul, 50ul, 100ul
Immunogen	Synthesized peptide derived from part region of human protein
Mol wt	N/A
Species reactivity	Human, Mouse
Clonality	Polyclonal
Recommended application	WB, ELISA
Concentration	1 mg/ml
Full name	DNA-directed RNA polymerases I, II, and III subunit RPABC3
Synonyms	DNA-directed RNA polymerases I, II, and III subunit RPABC3 ;RNA polymerases I, II, and III subunit ABC3;DNA-directed RNA polymerase II subunit H;DNA-directed RNA polymerases I, II, and III 17.1 kD

This product is for research use only, not for use in human, therapeutic or diagnostic procedure.

Background

The three eukaryotic RNA polymerases are complex multisubunit enzymes that play a central role in the transcription of nuclear genes. This gene encodes an essential and highly conserved subunit of RNA polymerase II that is shared by the other two eukaryotic DNA-directed RNA polymerases, I and III. Alternative splicing results in multiple transcript variants of this gene.

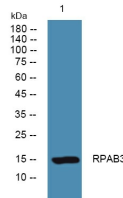
Recommended Dilution

WB: 1: 500 - 1: 2000

ELISA: 1: 5000 - 1: 20000

Not yet tested in other applications.

Images



Western blot analysis of lysates from DU145 cells, primary antibody was diluted at 1:1000, 4°C overnight

Storage

-20°C for 1 year