

RPB4 Polyclonal Antibody

Description

Product type	Primary Antibody
Code	BT-AP13907
Host	Rabbit
Isotype	IgG
Size	20ul, 50ul, 100ul
Immunogen	Synthesized peptide derived from part region of human protein
Mol wt	N/A
Species reactivity	Human, Mouse
Clonality	Polyclonal
Recommended application	WB, ELISA
Concentration	1 mg/ml
Full name	DNA-directed RNA polymerase II subunit RPB4
Synonyms	DNA-directed RNA polymerase II subunit RPB4 ;RNA polymerase II subunit B4;DNA-directed RNA polymerase II subunit D;RNA polymerase II 16 kDa subunit;RPB16

This product is for research use only, not for use in human, therapeutic or diagnostic procedure.

Background

This gene encodes the fourth largest subunit of RNA polymerase II, the polymerase responsible for synthesizing messenger RNA in eukaryotes. In yeast, this polymerase subunit is associated with the polymerase under suboptimal growth conditions and may have a stress protective role. A sequence for a ribosomal pseudogene is contained within the 3' untranslated region of the transcript from this gene.

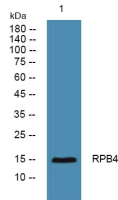
Recommended Dilution

WB: 1: 500 - 1: 2000

ELISA: 1: 5000 - 1: 20000

Not yet tested in other applications.

Images



Western blot analysis of lysates from Jarkat cells, primary antibody was diluted at 1:1000, 4°C overnight

Storage

-20°C for 1 year