

RPB7 Polyclonal Antibody

Description

Product type	Primary Antibody
Code	BT-AP13908
Host	Rabbit
Isotype	IgG
Size	20ul, 50ul, 100ul
Immunogen	Synthesized peptide derived from part region of human protein
Mol wt	N/A
Species reactivity	Human, Mouse, Rat
Clonality	Polyclonal
Recommended application	WB, ELISA
Concentration	1 mg/ml
Full name	DNA-directed RNA polymerase II subunit RPB7
Synonyms	DNA-directed RNA polymerase II subunit RPB7 ;RNA polymerase II subunit B7;DNA-directed RNA polymerase II subunit G;RNA polymerase II 19 kDa subunit;RPB19

This product is for research use only, not for use in human, therapeutic or diagnostic procedure.

Background

This gene encodes the seventh largest subunit of RNA polymerase II, the polymerase responsible for synthesizing messenger RNA in eukaryotes. The protein functions in transcription initiation, and is also thought to help stabilize transcribing polymerase molecules during elongation.

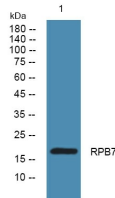
Recommended Dilution

WB: 1: 500 - 1: 2000

ELISA: 1: 5000 - 1: 20000

Not yet tested in other applications.

Images



Western blot analysis of lysates from KB cells, primary antibody was diluted at 1:1000, 4°C overnight

Storage

-20°C for 1 year