

## RPB9 Polyclonal Antibody

### Description

Product type	Primary Antibody
Code	BT-AP13909
Host	Rabbit
Isotype	IgG
Size	20ul, 50ul, 100ul
Immunogen	Synthesized peptide derived from part region of human protein
Mol wt	N/A
Species reactivity	Human, Mouse
Clonality	Polyclonal
Recommended application	WB, ELISA
Concentration	1 mg/ml
Full name	DNA-directed RNA polymerase II subunit RPB9
Synonyms	DNA-directed RNA polymerase II subunit RPB9 ;RNA polymerase II subunit B9;DNA-directed RNA polymerase II subunit I;RNA polymerase II 14.5 kDa subunit;RPB14.5

This product is for research use only, not for use in human, therapeutic or diagnostic procedure.

### Background

This gene encodes a subunit of RNA polymerase II, the polymerase responsible for synthesizing messenger RNA in eukaryotes. This subunit, in combination with two other polymerase subunits, forms the DNA binding domain of the polymerase, a groove in which the DNA template is transcribed into RNA. The product of this gene has two zinc finger motifs with conserved cysteines and the subunit does possess zinc binding activity.

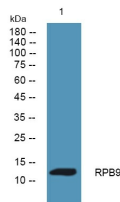
### Recommended Dilution

WB: 1: 500 - 1: 2000

ELISA: 1: 5000 - 1: 20000

Not yet tested in other applications.

### Images



Western blot analysis of lysates from PC12 cells, primary antibody was diluted at 1:1000, 4°C overnight

### Storage

-20°C for 1 year