

RPC9 Polyclonal Antibody

Description

Product type	Primary Antibody
Code	BT-AP13912
Host	Rabbit
Isotype	IgG
Size	20ul, 50ul, 100ul
Immunogen	Synthesized peptide derived from part region of human protein
Mol wt	N/A
Species reactivity	Human, Rat, Mouse
Clonality	Polyclonal
Recommended application	WB, ELISA
Concentration	1 mg/ml
Full name	DNA-directed RNA polymerase III subunit RPC9
Synonyms	DNA-directed RNA polymerase III subunit RPC9 ;RNA polymerase III subunit C9;Calcitonin gene-related peptide-receptor component protein;CGRP-RCP;CGRP-receptor component protein;CGRPRCP;HsC17

This product is for research use only, not for use in human, therapeutic or diagnostic procedure.

Background

This gene encodes a membrane protein that functions as part of a receptor complex for a small neuropeptide that increases intracellular cAMP levels. Alternate transcriptional splice variants, encoding different isoforms, have been characterized.

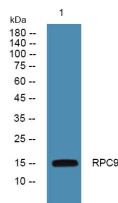
Recommended Dilution

WB: 1: 500 - 1: 2000

ELISA: 1: 5000 - 1: 20000

Not yet tested in other applications.

Images



Western blot analysis of lysates from U2OS cells, primary antibody was diluted at 1:1000, 4°C overnight

Storage

-20°C for 1 year