

RPRM Polyclonal Antibody

Description

Product type	Primary Antibody
Code	BT-AP13919
Host	Rabbit
Isotype	IgG
Size	20ul, 50ul, 100ul
Immunogen	Synthesized peptide derived from part region of human protein
Mol wt	N/A
Species reactivity	Human, Mouse, Rat
Clonality	Polyclonal
Recommended application	WB, ELISA
Concentration	1 mg/ml
Full name	Protein reprimo
Synonyms	Protein reprimo

This product is for research use only, not for use in human, therapeutic or diagnostic procedure.

Background

May be involved in the regulation of p53-dependent G2 arrest of the cell cycle. Seems to induce cell cycle arrest by inhibiting CDC2 activity and nuclear translocation of the CDC2 cyclin B1 complex.,induction:By TP53/p53, following X-ray irradiation.,miscellaneous:'Reprimo' signifies stop/repress.,Belongs to the reprimo family.,

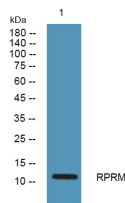
Recommended Dilution

WB: 1: 500 - 1: 2000

ELISA: 1: 5000 - 1: 20000

Not yet tested in other applications.

Images



Western blot analysis of lysates from K562 cells, primary antibody was diluted at 1:1000, 4°C overnight

Storage

-20°C for 1 year