

RRAGD Polyclonal Antibody

Description

Product type	Primary Antibody
Code	BT-AP13922
Host	Rabbit
Isotype	IgG
Size	20ul, 50ul, 100ul
Immunogen	Synthesized peptide derived from human protein . at AA range: 140-220
Mol wt	N/A
Species reactivity	Human, Mouse
Clonality	Polyclonal
Recommended application	WB, ELISA
Concentration	1 mg/ml
Full name	Ras-related GTP-binding protein D
Synonyms	Ras-related GTP-binding protein D ;Rag D;RagD

This product is for research use only, not for use in human, therapeutic or diagnostic procedure.

Background

RRAGD is a monomeric guanine nucleotide-binding protein, or G protein. By binding GTP or GDP, small G proteins act as molecular switches in numerous cell processes and signaling pathways.

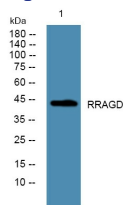
Recommended Dilution

WB: 1: 500 - 1: 2000

ELISA: 1: 5000 - 1: 20000

Not yet tested in other applications.

Images



Western blot analysis of lysates from KB cells, primary antibody was diluted at 1:1000, 4°C overnight

Storage

-20°C for 1 year