

## RRP7A Polyclonal Antibody

### Description

Product type	Primary Antibody
Code	BT-AP13929
Host	Rabbit
Isotype	IgG
Size	20ul, 50ul, 100ul
Immunogen	Synthesized peptide derived from the C-terminal region of human RRP7A.
Mol wt	N/A
Species reactivity	Human, Mouse, Rat
Clonality	Polyclonal
Recommended application	WB, IHC-p, IF, ELISA
Concentration	1 mg/ml
Full name	Ribosomal RNA-processing protein 7 homolog A/B
Synonyms	Ribosomal RNA-processing protein 7 homolog A/B; RRP7A; CGI-96; Ribosomal RNA-processing protein 7 homolog A; Gastric cancer antigen Zg14; RRP7B; Putative ribosomal RNA-processing protein 7 homolog B; Putative gastric cancer antigen Zg14-like protein

This product is for research use only, not for use in human, therapeutic or diagnostic procedure.

### Background

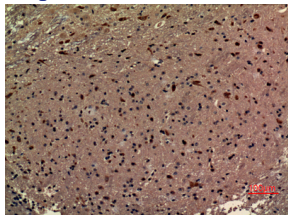
#### Recommended Dilution

WB: 1: 500 - 1: 2000

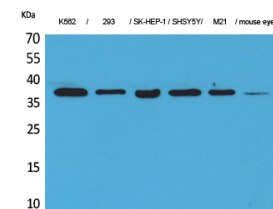
IHC-p: 1: 100 - 1: 300

Not yet tested in other applications.

### Images



Immunohistochemical analysis of paraffin-embedded mouse-brain, antibody was diluted at 1:100



Western Blot analysis of K562, 293, SK-HEP-1, SHSY5Y, M21, mouse eye cells using RRP7A Polyclonal Antibody. Secondary antibody was diluted at 1:20000

### Storage

-20°C for 1 year