

RS4Y2 Polyclonal Antibody

Description

Product type	Primary Antibody
Code	BT-AP13937
Host	Rabbit
Isotype	IgG
Size	20ul, 50ul, 100ul
Immunogen	Synthesized peptide derived from human protein . at AA range: 50-130
Mol wt	N/A
Species reactivity	Human, Rat, Mouse
Clonality	Polyclonal
Recommended application	WB, ELISA
Concentration	1 mg/ml
Full name	40S ribosomal protein S4, Y isoform 2
Synonyms	40S ribosomal protein S4, Y isoform 2

This product is for research use only, not for use in human, therapeutic or diagnostic procedure.

Background

The protein encoded by this gene is a ribosomal protein that is highly similar to RPS4Y1. This gene is located in the male-specific region of the Y chromosome.

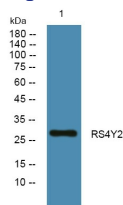
Recommended Dilution

WB: 1: 500 - 1: 2000

ELISA: 1: 5000 - 1: 20000

Not yet tested in other applications.

Images



Western blot analysis of lysates from K562 cells, primary antibody was diluted at 1:1000, 4°C overnight

Storage

-20°C for 1 year