

Nibrin(Phospho Ser278) Polyclonal Antibody

Description

Product type	Primary Antibody
Code	BT-AP13947
Host	Rabbit
Isotype	IgG
Size	20ul, 50ul, 100ul
Immunogen	The antiserum was produced against synthesized peptide derived from human Nibrin around the phosphorylation site of Ser278. AA range:251-300
Mol wt	84959
Species reactivity	Human, Rat, Mouse
Clonality	Polyclonal
Recommended application	WB, IF, ICC, ELISA
Concentration	1 mg/ml
Full name	Nibrin
Synonyms	Nibrin; NBN; NBS; NBS1; P95; Nibrin; Cell cycle regulatory protein p95; Nijmegen breakage syndrome protein 1

This product is for research use only, not for use in human, therapeutic or diagnostic procedure.

Background

Mutations in this gene are associated with Nijmegen breakage syndrome| an autosomal recessive chromosomal instability syndrome characterized by microcephaly| growth retardation| immunodeficiency| and cancer predisposition. The encoded protein is a member of the MRE11/RAD50 double-strand break repair complex which consists of 5 proteins. This gene product is thought to be involved in DNA double-strand break repair and DNA damage-induced checkpoint activation.

Recommended Dilution

WB: 1: 500 - 1: 2000

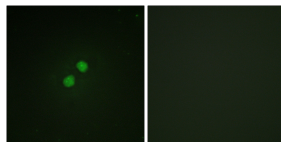
IF: 1: 200 - 1: 1000

ICC: 1: 200 - 1: 1000

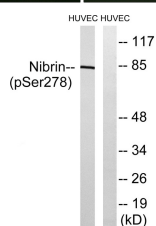
ELISA: 1: 10000

Not yet tested in other applications.

Images



Immunofluorescence analysis of NIH/3T3 cells, using Nibrin (Phospho-Ser278) Antibody. The picture on the right is blocked with the phospho peptide.



Western blot analysis of lysates from HUVEC cells treated with Forskolin 40nM 30', using Nibrin (Phospho-Ser278) Antibody. The lane on the right is blocked with the phospho peptide.

Storage

-20°C for 1 year

501 Changsheng S Rd, Nanhu Dist, Jiaxing, Zhejiang, China

Tel: 86 21 31007137 | E-mail: save@bt-laboratory.com | www.bt-laboratory.com