

Nibrin(Phospho Ser343) Polyclonal Antibody

Description

Product type	Primary Antibody
Code	BT-AP13948
Host	Rabbit
Isotype	IgG
Size	20ul, 50ul, 100ul
Immunogen	The antiserum was produced against synthesized peptide derived from human p95/NBS1 around the phosphorylation site of Ser343. AA range:310-359
Mol wt	84959
Species reactivity	Human, Rat
Clonality	Polyclonal
Recommended application	WB, ELISA
Concentration	1 mg/ml
Full name	Nibrin
Synonyms	Nibrin; NBN; NBS; NBS1; P95; Nibrin; Cell cycle regulatory protein p95; Nijmegen breakage syndrome protein 1

This product is for research use only, not for use in human, therapeutic or diagnostic procedure.

Background

Mutations in this gene are associated with Nijmegen breakage syndrome| an autosomal recessive chromosomal instability syndrome characterized by microcephaly| growth retardation| immunodeficiency| and cancer predisposition. The encoded protein is a member of the MRE11/RAD50 double-strand break repair complex which consists of 5 proteins. This gene product is thought to be involved in DNA double-strand break repair and DNA damage-induced checkpoint activation.

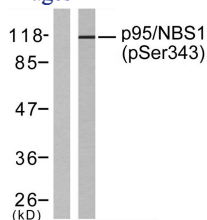
Recommended Dilution

WB: 1: 500 - 1: 2000

ELISA: 1: 5000

Not yet tested in other applications.

Images



Storage

-20°C for 1 year