

RSPH1 Polyclonal Antibody

Description

Product type	Primary Antibody
Code	BT-AP13950
Host	Rabbit
Isotype	IgG
Size	20ul, 50ul, 100ul
Immunogen	Synthesized peptide derived from human protein . at AA range: 50-130
Mol wt	N/A
Species reactivity	Human, Mouse
Clonality	Polyclonal
Recommended application	WB, ELISA
Concentration	1 mg/ml
Full name	Radial spoke head 1 homolog
Synonyms	Radial spoke head 1 homolog ;Cancer/testis antigen 79;CT79;Male meiotic metaphase chromosome-associated acidic protein;Meichroacidin;Testis-specific gene A2 protein

This product is for research use only, not for use in human, therapeutic or diagnostic procedure.

Background

This gene encodes a male meiotic metaphase chromosome-associated acidic protein. This gene is expressed in tissues with motile cilia or flagella, including the trachea, lungs, airway brushings, and testes. Mutations in this gene result in primary ciliary dyskinesia-24. Alternatively spliced transcript variants encoding different isoforms have been found for this gene.

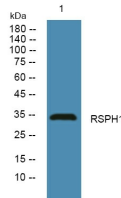
Recommended Dilution

WB: 1: 500 - 1: 2000

ELISA: 1: 5000 - 1: 20000

Not yet tested in other applications.

Images



Western blot analysis of lysates from U2OS cells, primary antibody was diluted at 1:1000, 4°C overnight

Storage

-20°C for 1 year