

Rubisco Polyclonal Antibody

Description

Product type	Primary Antibody
Code	BT-AP13966
Host	Mouse
Isotype	IgG
Size	20ul, 50ul, 100ul
Immunogen	Purified Protein
Mol wt	N/A
Species reactivity	VariousPlants
Clonality	Polyclonal
Recommended application	WB

Concentration

Full name

Synonyms

This product is for research use only, not for use in human, therapeutic or diagnostic procedure.

Background

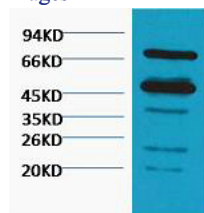
RuBisCO catalyzes two reactions: the carboxylation of D-ribulose 1,5-bisphosphate, the primary event in carbon dioxide fixation, as well as the oxidative fragmentation of the pentose substrate in the photorespiration process. Both reactions occur simultaneously and in competition at the same active site.

Recommended Dilution

WB: 1: 3000 - 1: 5000

Not yet tested in other applications.

Images



Western blot analysis of Arabidopsis thaliana, diluted at 1:5000. Secondary antibody was diluted at 1:20000

Storage

-20°C for 1 year

501 Changsheng S Rd, Nanhu Dist, Jiaxing, Zhejiang, China

Tel: 86 21 31007137 | E-mail: save@bt-laboratory.com | www.bt-laboratory.com