

AAMP Polyclonal Antibody

Description

Product type	Primary Antibody
Code	BT-AP13973
Host	Rabbit
Isotype	IgG
Size	20ul, 50ul, 100ul
Immunogen	Synthesized peptide derived from human protein . at AA range: 330-410
Mol wt	N/A
Species reactivity	Human, Rat, Mouse
Clonality	Polyclonal
Recommended application	WB, ELISA
Concentration	1 mg/ml
Full name	Angio-associated migratory cell protein
Synonyms	Angio-associated migratory cell protein

This product is for research use only, not for use in human, therapeutic or diagnostic procedure.

Background

The gene is a member of the immunoglobulin superfamily. The encoded protein is associated with angiogenesis| with potential roles in endothelial tube formation and the migration of endothelial cells. It may also regulate smooth muscle cell migration via the RhoA pathway. The encoded protein can bind to heparin and may mediate heparin-sensitive cell adhesion.

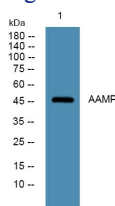
Recommended Dilution

WB: 1: 500 - 1: 2000

ELISA: 1: 5000 - 1: 20000

Not yet tested in other applications.

Images



Western blot analysis of lysates from SW480 cells, primary antibody was diluted at 1:1000, 4°C overnight

Storage

-20°C for 1 year