

AATC Polyclonal Antibody

Description

Product type	Primary Antibody
Code	BT-AP13974
Host	Rabbit
Isotype	IgG
Size	20ul, 50ul, 100ul
Immunogen	Synthesized peptide derived from part region of human protein
Mol wt	N/A
Species reactivity	Human, Mouse, Rat
Clonality	Polyclonal
Recommended application	WB, ELISA
Concentration	1 mg/ml
Full name	Aspartate aminotransferase cytoplasmic
Synonyms	Aspartate aminotransferase; cytoplasmic ;EC 2.6.1.1;Glutamate oxaloacetate transaminase 1;Transaminase A

This product is for research use only, not for use in human, therapeutic or diagnostic procedure.

Background

Glutamic-oxaloacetic transaminase is a pyridoxal phosphate-dependent enzyme which exists in cytoplasmic and mitochondrial forms| GOT1 and GOT2| respectively. GOT plays a role in amino acid metabolism and the urea and tricarboxylic acid cycles. The two enzymes are homodimeric and show close homology.

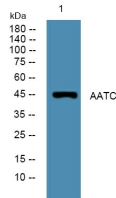
Recommended Dilution

WB: 1: 500 - 1: 2000

ELISA: 1: 5000 - 1: 20000

Not yet tested in other applications.

Images



Western blot analysis of lysates from KB cells, primary antibody was diluted at 1:1000, 4°C overnight

Storage

-20°C for 1 year