

RyR-2(Phospho Ser2808) Polyclonal Antibody

Description

Product type	Primary Antibody
Code	BT-AP13982
Host	Rabbit
Isotype	IgG
Size	20ul, 50ul, 100ul
Immunogen	The antiserum was produced against synthesized peptide derived from human RyR2 around the phosphorylation site of Ser2808. AA range:2774-2823
Mol wt	564498
Species reactivity	Human, Mouse, Rat
Clonality	Polyclonal
Recommended application	IHC-p, IF, ELISA
Concentration	1 mg/ml
Full name	Ryanodine receptor 2
Synonyms	Ryanodine receptor 2; RYR2; Ryanodine receptor 2; RYR-2; RyR2; hRYR-2; Cardiac muscle ryanodine receptor; Cardiac muscle ryanodine receptor-calcium release channel; Type 2 ryanodine receptor

This product is for research use only, not for use in human, therapeutic or diagnostic procedure.

Background

This gene encodes a ryanodine receptor found in cardiac muscle sarcoplasmic reticulum. The encoded protein is one of the components of a calcium channel, composed of a tetramer of the ryanodine receptor proteins and a tetramer of FK506 binding protein 1B proteins, that supplies calcium to cardiac muscle. Mutations in this gene are associated with stress-induced polymorphic ventricular tachycardia and arrhythmogenic right ventricular dysplasia.

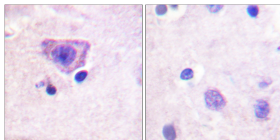
Recommended Dilution

IHC-p: 1: 100 - 1: 300

ELISA: 1: 10000

Not yet tested in other applications.

Images



Immunohistochemistry analysis of paraffin-embedded human brain, using RyR2 (Phospho-Ser2808) Antibody. The picture on the right is blocked with the phospho peptide.

Storage

-20°C for 1 year