

## S10AC Polyclonal Antibody

### Description

<b>Product type</b>	Primary Antibody
<b>Code</b>	BT-AP13997
<b>Host</b>	Rabbit
<b>Isotype</b>	IgG
<b>Size</b>	20ul, 50ul, 100ul
<b>Immunogen</b>	Synthesized peptide derived from human protein . at AA range: 1-80
<b>Mol wt</b>	N/A
<b>Species reactivity</b>	Human, Rat, Mouse
<b>Clonality</b>	Polyclonal
<b>Recommended application</b>	WB, ELISA
<b>Concentration</b>	1 mg/ml
<b>Full name</b>	Protein S100-A12
<b>Synonyms</b>	Protein S100-A12 ;CGRP;Calcium-binding protein in amniotic fluid 1;CAAF1;Calgranulin-C;CAGC;Extracellular newly identified RAGE-binding protein;EN-RAGE;Migration inhibitory factor-relate

This product is for research use only, not for use in human, therapeutic or diagnostic procedure.

### Background

The protein encoded by this gene is a member of the S100 family of proteins containing 2 EF-hand calcium-binding motifs. S100 proteins are localized in the cytoplasm and/or nucleus of a wide range of cells, and involved in the regulation of a number of cellular processes such as cell cycle progression and differentiation. S100 genes include at least 13 members which are located as a cluster on chromosome 1q21. This protein is proposed to be involved in specific calcium-dependent signal transduction pathways and its regulatory effect on cytoskeletal components may modulate various neutrophil activities. The protein includes an antimicrobial peptide which has antibacterial activity.

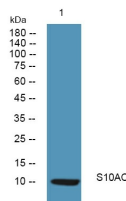
### Recommended Dilution

WB: 1: 500 - 1: 2000

ELISA: 1: 5000 - 1: 20000

Not yet tested in other applications.

### Images



Western blot analysis of lysates from A431 cells, primary antibody was diluted at 1:1000, 4°C overnight

### Storage

-20°C for 1 year