

S35B2 Polyclonal Antibody

Description

Product type	Primary Antibody
Code	BT-AP14012
Host	Rabbit
Isotype	IgG
Size	20ul, 50ul, 100ul
Immunogen	Synthesized peptide derived from part region of human protein
Mol wt	N/A
Species reactivity	Human, Mouse
Clonality	Polyclonal
Recommended application	WB, ELISA
Concentration	1 mg/ml
Full name	Adenosine 3'-phospho 5'-phosphosulfate transporter 1
Synonyms	Adenosine 3'-phospho 5'-phosphosulfate transporter 1 ;PAPS transporter 1;Putative MAPK-activating protein PM15;Putative NF-kappa-B-activating protein 48;Solute carrier family 35 member B2

This product is for research use only, not for use in human, therapeutic or diagnostic procedure.

Background

Sulfotransferases (e.g., SULT4A1; MIM 608359) use an activated form of sulfate, 3-prime-phosphoadenosine 5-prime-phosphosulfate (PAPS), as a common sulfate donor for sulfation of glycoproteins, proteoglycans, and glycolipids in the endoplasmic reticulum and Golgi apparatus. SLC35B2 is located in the microsomal membrane and transports PAPS from the cytosol, where it is synthesized, into the Golgi lumen (Kamiyama et al., 2003)

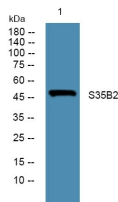
Recommended Dilution

WB: 1: 500 - 1: 2000

ELISA: 1: 5000 - 1: 20000

Not yet tested in other applications.

Images



Western blot analysis of lysates from DU145 cells, primary antibody was diluted at 1:1000, 4°C overnight

Storage

-20°C for 1 year