

Acetyl eIF5A/eIF5A2 (K47) Polyclonal Antibody

Description

Product type	Primary Antibody
Code	BT-AP14069
Host	Rabbit
Isotype	IgG
Size	20ul, 50ul, 100ul
Immunogen	The antiserum was produced against synthesized Acetyl-peptide derived from human eIF5A around the Acetylation site of Lys47. AA range:11-60
Mol wt	N/A
Species reactivity	Human, Mouse, Rat
Clonality	Polyclonal
Recommended application	WB, ELISA
Concentration	1 mg/ml
Full name	Eukaryotic translation initiation factor 5A-2
Synonyms	Eukaryotic translation initiation factor 5A-2; EIF5A2; Eukaryotic translation initiation factor 5A-2; eIF-5A-2; eIF-5A2; Eukaryotic initiation factor 5A isoform 2

This product is for research use only, not for use in human, therapeutic or diagnostic procedure.

Background

The precise role of eIF-5A in protein biosynthesis is not known but it functions by promoting the formation of the first peptide bond. PTM: eIF-5A seems to be the only eukaryotic protein to have an hypusine residue which is a post-translational modification of a lysine by the addition of a butylamino group (from spermidine). Belongs to the eIF-5A family. Tissue specificity: Expressed in ovarian and colorectal cancer cell lines (at protein level). Highly expressed in testis. Overexpressed in some cancer cells.

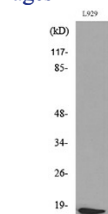
Recommended Dilution

WB: 1: 500 - 1: 2000

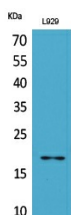
ELISA: 1: 20000

Not yet tested in other applications.

Images



Western blot analysis of L929 lysis using antibody diluted at 1:1000. Secondary antibody was diluted at 1:20000



Western blot analysis of lysate from L929 cells, using eIF5A (Acetyl-Lys47) Antibody.

Storage

-20°C for 1 year

501 Changsheng S Rd, Nanhu Dist, Jiaxing, Zhejiang, China

Tel: 86 21 31007137 | E-mail: save@bt-laboratory.com | www.bt-laboratory.com