

Acetyl Lys proteins Polyclonal Antibody

Description

Product type	Primary Antibody
Code	BT-AP14071
Host	Rabbit
Isotype	IgG
Size	20ul, 50ul, 100ul
Immunogen	Synthesized acetyl-peptide derived from human acetylation Lys proteins.
Mol wt	N/A
Species reactivity	Human, Mouse, Rat, Monkey
Clonality	Polyclonal
Recommended application	WB, IHC-p, IF, ICC, ELISA
Concentration	1 mg/ml

Full name

Synonyms

This product is for research use only, not for use in human, therapeutic or diagnostic procedure.

Background

Acetylation of lysine| like phosphorylation of serine| threonine or tyrosine| is an important reversible modification controlling protein activity. The conserved amino-terminal domains of the four core histones (H2A| H2B| H3| and H4) contain lysines that are acetylated by histone acetyltransferases (HATs) and deacetylated by histone deacetylases (HDACs). Signaling resulting in acetylation/deacetylation of histones| transcription factors| and other proteins affects a diverse array of cellular processes including chromatin structure and gene activity| cell growth| differentiation| and apoptosis. Recent proteomic surveys suggest that acetylation of lysine residues may be a widespread and important form of posttranslational protein modification that affects thousands of proteins involved in control of cell cycle and metabolism| longevity| actin polymerization| and nuclear transport. The regulation of protein acetylation status is impaired in cancer and polyglutamine diseases| and HDACs have become promising targets for anti-cancer drugs currently in development.

Recommended Dilution

WB: 1: 500 - 1: 2000

IHC-p: 1: 100 - 1: 300

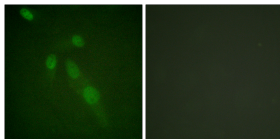
IF: 1: 200 - 1: 1000

ICC: 1: 200 - 1: 1000

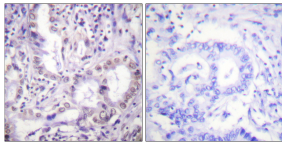
ELISA: 1: 10000

Not yet tested in other applications.

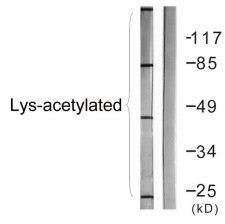
Images



Immunofluorescence analysis of HeLa cells, using Lys-Acetylated Proteins Antibody. The picture on the right is blocked with the synthesized peptide.



Immunohistochemistry analysis of paraffin-embedded human lung carcinoma, using Lys-Acetylated Proteins Antibody. The picture on the right is blocked with the synthesized peptide.



Western blot analysis of lysates from COS7 cells treated with TSA 400uM 24h, using Lys-Acetylated Proteins Antibody. The lane on the right is blocked with the synthesized peptide.

Storage

-20°C for 1 year

501 Changsheng S Rd, Nanhu Dist, Jiaxing, Zhejiang, China

Tel: 86 21 31007137 | E-mail: save@bt-laboratory.com | www.bt-laboratory.com