

Sec16A Polyclonal Antibody

Description

Product type	Primary Antibody
Code	BT-AP14095
Host	Rabbit
Isotype	IgG
Size	20ul, 50ul, 100ul
Immunogen	The antiserum was produced against synthesized peptide derived from human SEC16A. AA range:1013-1062
Mol wt	N/A
Species reactivity	Human, Rat, Mouse
Clonality	Polyclonal
Recommended application	IHC-p, IF, ELISA
Concentration	1 mg/ml
Full name	Protein transport protein Sec16A
Synonyms	Protein transport protein Sec16A; SEC16A; KIAA0310; SEC16; SEC16L; Protein transport protein Sec16A; SEC16 homolog A

This product is for research use only, not for use in human, therapeutic or diagnostic procedure.

Background

This gene encodes a protein that forms part of the Sec16 complex. This protein has a role in protein transport from the endoplasmic reticulum (ER) to the Golgi and mediates COPII vesicle formation at the transitional ER. Alternative splicing results in multiple transcript variants that encode different protein isoforms.

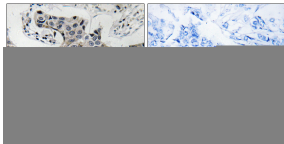
Recommended Dilution

IHC-p: 1: 100 - 1: 300

ELISA: 1: 20000

Not yet tested in other applications.

Images



Immunohistochemistry analysis of paraffin-embedded human breast carcinoma, using SEC16A Antibody. The picture on the right is blocked with the synthesized peptide.

Storage

-20°C for 1 year