

ACTG Polyclonal Antibody

Description

Product type	Primary Antibody
Code	BT-AP14118
Host	Rabbit
Isotype	IgG
Size	20ul, 50ul, 100ul
Immunogen	Synthesized peptide derived from part region of human protein
Mol wt	N/A
Species reactivity	Human, Rat, Mouse
Clonality	Polyclonal
Recommended application	WB, ELISA
Concentration	1 mg/ml
Full name	Actin cytoplasmic 2
Synonyms	Actin; cytoplasmic 2 ;Gamma-actin [Cleaved into: Actin; cytoplasmic 2; N-terminally processed]

This product is for research use only, not for use in human, therapeutic or diagnostic procedure.

Background

Actins are highly conserved proteins that are involved in various types of cell motility| and maintenance of the cytoskeleton. In vertebrates| three main groups of actin isoforms| alpha| beta and gamma have been identified. The alpha actins are found in muscle tissues and are a major constituent of the contractile apparatus. The beta and gamma actins co-exist in most cell types as components of the cytoskeleton| and as mediators of internal cell motility. Actin| gamma 1| encoded by this gene| is a cytoplasmic actin found in non-muscle cells. Mutations in this gene are associated with DFNA20/26| a subtype of autosomal dominant non-syndromic sensorineural progressive hearing loss. Alternative splicing results in multiple transcript variants.

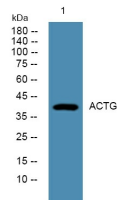
Recommended Dilution

WB: 1: 500 - 1: 2000

ELISA: 1: 5000 - 1: 20000

Not yet tested in other applications.

Images



Western blot analysis of lysates from KB cells, primary antibody was diluted at 1:1000, 4°C overnight

Storage

-20°C for 1 year