

ADA Polyclonal Antibody

Description

Product type	Primary Antibody
Code	BT-AP14123
Host	Rabbit
Isotype	IgG
Size	20ul, 50ul, 100ul
Immunogen	Synthesized peptide derived from human protein . at AA range: 80-160
Mol wt	N/A
Species reactivity	Human, Rat, Mouse
Clonality	Polyclonal
Recommended application	WB, ELISA
Concentration	1 mg/ml
Full name	Adenosine deaminase
Synonyms	Adenosine deaminase ;EC 3.5.4.4;Adenosine aminohydrolase

This product is for research use only, not for use in human, therapeutic or diagnostic procedure.

Background

This gene encodes an enzyme that catalyzes the hydrolysis of adenosine to inosine. Various mutations have been described for this gene and have been linked to human diseases. Deficiency in this enzyme causes a form of severe combined immunodeficiency disease (SCID) in which there is dysfunction of both B and T lymphocytes with impaired cellular immunity and decreased production of immunoglobulins whereas elevated levels of this enzyme have been associated with congenital hemolytic anemia.

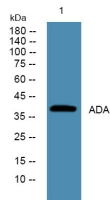
Recommended Dilution

WB: 1: 500 - 1: 2000

ELISA: 1: 5000 - 1: 20000

Not yet tested in other applications.

Images



Western blot analysis of lysates from K562 cells, primary antibody was diluted at 1:1000, 4°C overnight

Storage

-20°C for 1 year