

ADAM9 Polyclonal Antibody

Description

Product type	Primary Antibody
Code	BT-AP14133
Host	Rabbit
Isotype	IgG
Size	20ul, 50ul, 100ul
Immunogen	Synthesized peptide derived from human protein . at AA range: 120-200
Mol wt	N/A
Species reactivity	Human, Rat, Mouse
Clonality	Polyclonal
Recommended application	WB, ELISA
Concentration	1 mg/ml
Full name	Disintegrin and metalloproteinase domain-containing protein 9
Synonyms	Disintegrin and metalloproteinase domain-containing protein 9 ;ADAM 9;EC 3.4.24.-;Cellular disintegrin-related protein;Meltrin-gamma;Metalloprotease/disintegrin/cysteine-rich protein 9;Myelo

This product is for research use only, not for use in human, therapeutic or diagnostic procedure.

Background

This gene encodes a member of the ADAM (a disintegrin and metalloprotease domain) family. Members of this family are membrane-anchored proteins structurally related to snake venom disintegrins| and have been implicated in a variety of biological processes involving cell-cell and cell-matrix interactions| including fertilization| muscle development| and neurogenesis. The protein encoded by this gene interacts with SH3 domain-containing proteins| binds mitotic arrest deficient 2 beta protein| and is also involved in TPA-induced ectodomain shedding of membrane-anchored heparin-binding EGF-like growth factor. Several alternatively spliced transcript variants have been identified for this gene.

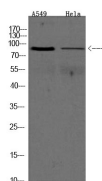
Recommended Dilution

WB: 1: 500 - 1: 2000

ELISA: 1: 5000 - 1: 20000

Not yet tested in other applications.

Images



Western Blot analysis of various cell lysis. Primary Antibody was diluted at 1:1000. Secondary antibody was diluted at 1:10000

Storage

-20°C for 1 year