

SERPH Polyclonal Antibody

Description

Product type	Primary Antibody
Code	BT-AP14138
Host	Rabbit
Isotype	IgG
Size	20ul, 50ul, 100ul
Immunogen	Synthesized peptide derived from human protein . at AA range: 190-270
Mol wt	N/A
Species reactivity	Human, Mouse, Rat
Clonality	Polyclonal
Recommended application	WB, ELISA
Concentration	1 mg/ml
Full name	Serpin H1
Synonyms	Serpin H1 ;47 kDa heat shock protein;Arsenic-transactivated protein 3;AsTP3;Cell proliferation-inducing gene 14 protein;Collagen-binding protein;Colligin;Rheumatoid arthritis-related antig

This product is for research use only, not for use in human, therapeutic or diagnostic procedure.

Background

This gene encodes a member of the serpin superfamily of serine proteinase inhibitors. The encoded protein is localized to the endoplasmic reticulum and plays a role in collagen biosynthesis as a collagen-specific molecular chaperone. Autoantibodies to the encoded protein have been found in patients with rheumatoid arthritis. Expression of this gene may be a marker for cancer, and nucleotide polymorphisms in this gene may be associated with preterm birth caused by preterm premature rupture of membranes. Alternatively spliced transcript variants have been observed for this gene, and a pseudogene of this gene is located on the short arm of chromosome 9.

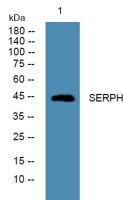
Recommended Dilution

WB: 1: 500 - 1: 2000

ELISA: 1: 5000 - 1: 20000

Not yet tested in other applications.

Images



Western blot analysis of lysates from DU145 cells, primary antibody was diluted at 1:1000, 4°C overnight

Storage

-20°C for 1 year