

SFTA1 Polyclonal Antibody

Description

Product type	Primary Antibody
Code	BT-AP14158
Host	Rabbit
Isotype	IgG
Size	20ul, 50ul, 100ul
Immunogen	Synthesized peptide derived from part region of human protein
Mol wt	N/A
Species reactivity	Human, Rat, Mouse
Clonality	Polyclonal
Recommended application	WB, ELISA
Concentration	1 mg/ml
Full name	Pulmonary surfactant-associated protein A1
Synonyms	Pulmonary surfactant-associated protein A1 ;PSP-A;PSPA;SP-A;SP-A1;35 kDa pulmonary surfactant-associated protein;Alveolar proteinosis protein;Collectin-4

This product is for research use only, not for use in human, therapeutic or diagnostic procedure.

Background

This gene encodes a lung surfactant protein that is a member of a subfamily of C-type lectins called collectins. The encoded protein binds specific carbohydrate moieties found on lipids and on the surface of microorganisms. This protein plays an essential role in surfactant homeostasis and in the defense against respiratory pathogens. Mutations in this gene are associated with idiopathic pulmonary fibrosis. Alternate splicing results in multiple transcript variants.

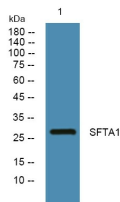
Recommended Dilution

WB: 1: 500 - 1: 2000

ELISA: 1: 5000 - 1: 20000

Not yet tested in other applications.

Images



Western blot analysis of lysates from KB cells, primary antibody was diluted at 1:1000, 4°C overnight

Storage

-20°C for 1 year