

SH3G3 Polyclonal Antibody

Description

Product type	Primary Antibody
Code	BT-AP14189
Host	Rabbit
Isotype	IgG
Size	20ul, 50ul, 100ul
Immunogen	Synthesized peptide derived from part region of human protein
Mol wt	N/A
Species reactivity	Human, Rat, Mouse
Clonality	Polyclonal
Recommended application	WB, ELISA
Concentration	1 mg/ml
Full name	Endophilin-A3
Synonyms	Endophilin-A3 ;EEN-B2;Endophilin-3;SH3 domain protein 2C;SH3 domain-containing GRB2-like protein 3

This product is for research use only, not for use in human, therapeutic or diagnostic procedure.

Background

An N-terminal amphipathic helix, the BAR domain and a second amphipathic helix inserted into helix 1 of the BAR domain (N-BAR domain) induce membrane curvature and bind curved membranes., Implicated in endocytosis. May recruit other proteins to membranes with high curvature., Belongs to the endophilin family., Contains 1 BAR domain., Contains 1 SH3 domain., subcellular location: Associated with postsynaptic endosomes in hippocampal neurons. Associated with presynaptic endosomes in olfactory neurons., subunit: Interacts with ARC (By similarity). Interacts with DNMI1, SGIP1 and SYNJ1. Interacts with the huntingtin exon 1 protein (HDEX1P) containing a glutamine repeat in the pathological range and promotes formation of insoluble polyglutamine-containing aggregates in vivo., tissue specificity: Brain and testis.,

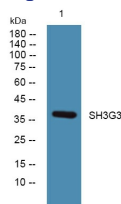
Recommended Dilution

WB: 1: 500 - 1: 2000

ELISA: 1: 5000 - 1: 20000

Not yet tested in other applications.

Images



Western blot analysis of lysates from K562 cells, primary antibody was diluted at 1:1000, 4°C overnight

Storage

-20°C for 1 year