

## Shb(Phospho Tyr246) Polyclonal Antibody

### Description

<b>Product type</b>	Primary Antibody
<b>Code</b>	BT-AP14199
<b>Host</b>	Rabbit
<b>Isotype</b>	IgG
<b>Size</b>	20ul, 50ul, 100ul
<b>Immunogen</b>	Synthesized phospho-peptide around the phosphorylation site of human Shb (phospho Tyr246)
<b>Mol wt</b>	55042
<b>Species reactivity</b>	Human, Mouse
<b>Clonality</b>	Polyclonal
<b>Recommended application</b>	WB, ELISA
<b>Concentration</b>	1 mg/ml
<b>Full name</b>	SH2 domain-containing adapter protein B
<b>Synonyms</b>	SH2 domain-containing adapter protein B; SHB; SH2 domain-containing adapter protein B

This product is for research use only, not for use in human, therapeutic or diagnostic procedure.

### Background

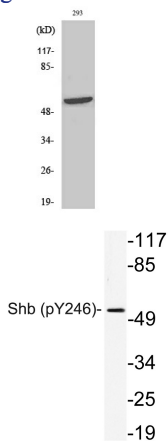
#### Recommended Dilution

WB: 1: 500 - 1: 2000

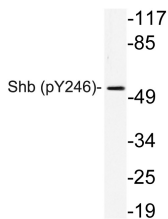
ELISA: 1: 10000

Not yet tested in other applications.

### Images



Western Blot analysis of various cells using Phospho-Shb (Y246) Polyclonal Antibody



Western blot analysis of lysate from 293 cells, using phospho-Serhb (Phospho-Tyr246) antibody.

### Storage

-20°C for 1 year