

## SHBG Polyclonal Antibody

### Description

Product type	Primary Antibody
Code	BT-AP14201
Host	Rabbit
Isotype	IgG
Size	20ul, 50ul, 100ul
Immunogen	Synthesized peptide derived from part region of human protein
Mol wt	N/A
Species reactivity	Human, Rat, Mouse
Clonality	Polyclonal
Recommended application	WB, ELISA
Concentration	1 mg/ml
Full name	Sex hormone-binding globulin
Synonyms	Sex hormone-binding globulin ;SHBG;Sex steroid-binding protein;SBP;Testis-specific androgen-binding protein;ABP;Testosterone-estradiol-binding globulin;TeBG;Testosterone-estrogen-binding

This product is for research use only, not for use in human, therapeutic or diagnostic procedure.

### Background

This gene encodes a steroid binding protein that was first described as a plasma protein secreted by the liver but is now thought to participate in the regulation of steroid responses. The encoded protein transports androgens and estrogens in the blood, binding each steroid molecule as a dimer formed from identical or nearly identical monomers. Polymorphisms in this gene have been associated with polycystic ovary syndrome and type 2 diabetes mellitus. Alternative splicing results in multiple transcript variants.

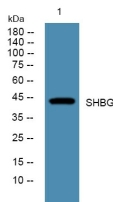
### Recommended Dilution

WB: 1: 500 - 1: 2000

ELISA: 1: 5000 - 1: 20000

Not yet tested in other applications.

### Images



Western blot analysis of lysates from Jarkat cells, primary antibody was diluted at 1:1000, 4°C overnight

### Storage

-20°C for 1 year