

## SIGIR Polyclonal Antibody

### Description

Product type	Primary Antibody
Code	BT-AP14223
Host	Rabbit
Isotype	IgG
Size	20ul, 50ul, 100ul
Immunogen	Synthesized peptide derived from part region of human protein
Mol wt	N/A
Species reactivity	Human, Rat, Mouse
Clonality	Polyclonal
Recommended application	WB, ELISA
Concentration	1 mg/ml
Full name	Single Ig IL-1-related receptor
Synonyms	Single Ig IL-1-related receptor ;Single Ig IL-1R-related molecule;Single immunoglobulin domain-containing IL1R-related protein;Toll/interleukin-1 receptor 8;TIR8

This product is for research use only, not for use in human, therapeutic or diagnostic procedure.

### Background

Acts as a negative regulator of the Toll-like and IL-1R receptor signaling pathways. Attenuates the recruitment of receptor-proximal signaling components to the TLR4 receptor, probably through an TIR-TIR domain interaction with TLR4. Through its extracellular domain interferes with the heterodimerization of IL1R1 and IL1RAP. Belongs to the interleukin-1 receptor family. Contains 1 Ig-like C2-type (immunoglobulin-like) domain. Contains 1 TIR domain. subunit: Interacts with IL1R1, IRAK1, TLR4, TLR5, TLR9 and TRAF6. Upon IL-1 stimulation found in a complex at least composed of IL1R1, SIGIRR, MYD88, IRAK1 and TRAF6. Upon stimulation with LPC found in a complex at least composed of TLR4, SIG1R, MYD88, IRAK1 and TRAF6. tissue specificity: Mainly expressed in epithelial tissues such as kidney, lung and gut.

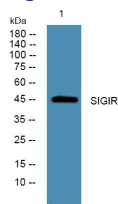
### Recommended Dilution

WB: 1: 500 - 1: 2000

ELISA: 1: 5000 - 1: 20000

Not yet tested in other applications.

### Images



Western blot analysis of lysates from PC12 cells, primary antibody was diluted at 1:1000, 4°C overnight

### Storage

-20°C for 1 year