

SIR4 Polyclonal Antibody

Description

Product type	Primary Antibody
Code	BT-AP14232
Host	Rabbit
Isotype	IgG
Size	20ul, 50ul, 100ul
Immunogen	Synthesized peptide derived from human protein . at AA range: 30-110
Mol wt	N/A
Species reactivity	Human, Mouse
Clonality	Polyclonal
Recommended application	WB, ELISA
Concentration	1 mg/ml
Full name	NAD-dependent protein deacetylase sirtuin-4
Synonyms	NAD-dependent protein deacetylase sirtuin-4 ;EC 3.5.1.-;NAD-dependent ADP-ribosyltransferase sirtuin-4;EC 2.4.2.-;Regulatory protein SIR2 homolog 4;SIR2-like protein 4

This product is for research use only, not for use in human, therapeutic or diagnostic procedure.

Background

This gene encodes a member of the sirtuin family of proteins, homologs to the yeast Sir2 protein. Members of the sirtuin family are characterized by a sirtuin core domain and grouped into four classes. The functions of human sirtuins have not yet been determined; however, yeast sirtuin proteins are known to regulate epigenetic gene silencing and suppress recombination of rDNA. Studies suggest that the human sirtuins may function as intracellular regulatory proteins with mono-ADP-ribosyltransferase activity. The protein encoded by this gene is included in class IV of the sirtuin family.

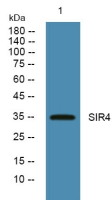
Recommended Dilution

WB: 1: 500 - 1: 2000

ELISA: 1: 5000 - 1: 20000

Not yet tested in other applications.

Images



Western blot analysis of lysates from HCT116 cells, primary antibody was diluted at 1:1000, 4°C overnight

Storage

-20°C for 1 year