

APOA2 Polyclonal Antibody

Description

Product type	Primary Antibody
Code	BT-AP14245
Host	Rabbit
Isotype	IgG
Size	20ul, 50ul, 100ul
Immunogen	Synthesized peptide derived from part region of human protein
Mol wt	N/A
Species reactivity	Human, Rat, Mouse
Clonality	Polyclonal
Recommended application	WB, ELISA
Concentration	1 mg/ml
Full name	Apolipoprotein A-II
Synonyms	Apolipoprotein A-II ;Apo-AII;ApoA-II;Apolipoprotein A2 [Cleaved into: Truncated apolipoprotein A-II ;Apolipoprotein A-II;1-76]

This product is for research use only, not for use in human, therapeutic or diagnostic procedure.

Background

This gene encodes apolipoprotein (apo-) A-II, which is the second most abundant protein of the high density lipoprotein particles. The protein is found in plasma as a monomer, homodimer, or heterodimer with apolipoprotein D. Defects in this gene may result in apolipoprotein A-II deficiency or hypercholesterolemia.

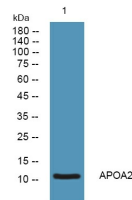
Recommended Dilution

WB: 1: 500 - 1: 2000

ELISA: 1: 5000 - 1: 20000

Not yet tested in other applications.

Images



Western blot analysis of lysates from SH-SY5Y cells, primary antibody was diluted at 1:1000, 4°C overnight

Storage

-20°C for 1 year