

SLAF7 Polyclonal Antibody

Description

Product type	Primary Antibody
Code	BT-AP14255
Host	Rabbit
Isotype	IgG
Size	20ul, 50ul, 100ul
Immunogen	Synthesized peptide derived from part region of human protein
Mol wt	N/A
Species reactivity	Human, Mouse
Clonality	Polyclonal
Recommended application	WB, ELISA
Concentration	1 mg/ml
Full name	SLAM family member 7
Synonyms	SLAM family member 7 ;CD2 subset 1;CD2-like receptor-activating cytotoxic cells;CRACC;Membrane protein FOAP-12;Novel Ly9;Protein 19A;CD antigen CD319

This product is for research use only, not for use in human, therapeutic or diagnostic procedure.

Background

Isoform 1 mediates NK cell activation through a SAP-independent extracellular signal-regulated ERK-mediated pathway. May play a role in lymphocyte adhesion. Isoform 3 does not mediate any activation. SAP can bind the cytoplasmic tail of isoform 1 when phosphorylated in the presence of Fyn (in vitro).,Contains 1 Ig-like C2-type (immunoglobulin-like) domain.,tissue specificity:Expressed in spleen, lymph node, peripheral blood leukocytes, bone marrow, small intestine, stomach, appendix, lung and trachea. Expression was detected in NK cells, activated B-cells, NK-cell line but not in promyelocytic, B-, or T-cell lines. The isoform 3 is expressed at much lower level than isoform 1.,

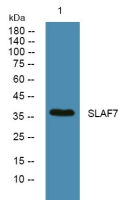
Recommended Dilution

WB: 1: 500 - 1: 2000

ELISA: 1: 5000 - 1: 20000

Not yet tested in other applications.

Images



Western blot analysis of lysates from DU145 cells, primary antibody was diluted at 1:1000, 4°C overnight

Storage

-20°C for 1 year