

SLAP1 Polyclonal Antibody

Description

Product type	Primary Antibody
Code	BT-AP14258
Host	Rabbit
Isotype	IgG
Size	20ul, 50ul, 100ul
Immunogen	Synthesized peptide derived from part region of human protein
Mol wt	N/A
Species reactivity	Human, Rat, Mouse
Clonality	Polyclonal
Recommended application	WB, ELISA
Concentration	1 mg/ml
Full name	Src-like-adapter
Synonyms	Src-like-adapter ;Src-like-adapter protein 1;SLAP-1;hSLAP

This product is for research use only, not for use in human, therapeutic or diagnostic procedure.

Background

The C-terminal domain is essential for the homodimerization and the interaction with CBL. While the interaction with CBL is apparently mediated via the hydrophobic region of this domain, the highly charged region is apparently required for the homodimerization. Adapter protein, which negatively regulates T-cell receptor (TCR) signaling. Inhibits T-cell antigen-receptor induced activation of nuclear factor of activated T-cells. Involved in the negative regulation of positive selection and mitosis of T-cells. May act by linking signaling proteins such as ZAP70 with CBL, leading to a CBL dependent degradation of signaling proteins. Induction: By all-trans retinoic acid (ATRA). Induction is indirect and is mediated through other proteins. PTM: Phosphorylated. Contains 1 SH2 domain. Contains 1 SH3 domain. subcellular location: Colocalizes with endosomes. subunit: Interacts with EPHA2, VAV1, LCP2 and PDGFRB (By similarity). Homodimer. Homodimerization and interaction with phosphorylated CBL occurs via its C-terminal domain. Interacts with phosphorylated proteins ZAP70, CD3Z, SYK and LAT via its SH2 domain. tissue specificity: Expressed in lung and fetal brain. Weakly expressed in heart, adult brain, placenta, liver, skeletal muscle, kidney and pancreas.

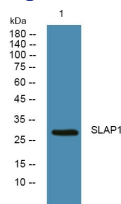
Recommended Dilution

WB: 1: 500 - 1: 2000

ELISA: 1: 5000 - 1: 20000

Not yet tested in other applications.

Images



Western blot analysis of lysates from K562 cells, primary antibody was diluted at 1:1000, 4°C overnight

Storage

-20°C for 1 year

501 Changsheng S Rd, Nanhu Dist, Jiaxing, Zhejiang, China

Tel: 86 21 31007137 | E-mail: save@bt-laboratory.com | www.bt-laboratory.com