

APOH Polyclonal Antibody

Description

Product type	Primary Antibody
Code	BT-AP14260
Host	Rabbit
Isotype	IgG
Size	20ul, 50ul, 100ul
Immunogen	Synthesized peptide derived from part region of human protein
Mol wt	N/A
Species reactivity	Human, Rat, Mouse
Clonality	Polyclonal
Recommended application	WB, ELISA
Concentration	1 mg/ml
Full name	Beta-2-glycoprotein 1
Synonyms	Beta-2-glycoprotein 1 ;APC inhibitor;Activated protein C-binding protein;Anticardiolipin cofactor;Apolipoprotein H;Apo-H;Beta-2-glycoprotein I;B2GPI;Beta;2GPI

This product is for research use only, not for use in human, therapeutic or diagnostic procedure.

Background

Apolipoprotein H has been implicated in a variety of physiologic pathways including lipoprotein metabolism, coagulation, and the production of antiphospholipid autoantibodies. APOH may be a required cofactor for anionic phospholipid binding by the antiphospholipid autoantibodies found in sera of many patients with lupus and primary antiphospholipid syndrome, but it does not seem to be required for the reactivity of antiphospholipid autoantibodies associated with infections.

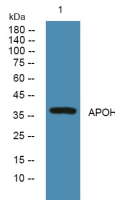
Recommended Dilution

WB: 1: 500 - 1: 2000

ELISA: 1: 5000 - 1: 20000

Not yet tested in other applications.

Images



Western blot analysis of lysates from SH-SY5Y cells, primary antibody was diluted at 1:1000, 4°C overnight

Storage

-20°C for 1 year