

SLC12A4 Polyclonal Antibody

Description

Product type	Primary Antibody
Code	BT-AP14261
Host	Rabbit
Isotype	IgG
Size	20ul, 50ul, 100ul
Immunogen	Synthetic Peptide of SLC12A4
Mol wt	N/A
Species reactivity	Human, Rat, Mouse
Clonality	Polyclonal
Recommended application	WB, IHC-p, IF
Concentration	1 mg/ml
Full name	Solute carrier family 12 member 4
Synonyms	Solute carrier family 12 member 4 ;Electroneutral potassium-chloride cotransporter 1;Erythroid K-Cl cotransporter 1;hKCC1; Solute carrier family 12 member 4; Electroneutral potassium-chloride cotransporter 1; Erythroid K-Cl cotransporter 1; hKCC1

This product is for research use only, not for use in human, therapeutic or diagnostic procedure.

Background

This gene encodes a member of the SLC12A transporter family. The encoded protein mediates the coupled movement of potassium and chloride ions across the plasma membrane. This gene is expressed ubiquitously. Multiple alternatively spliced transcript variants encoding distinct isoforms have been found for this gene.

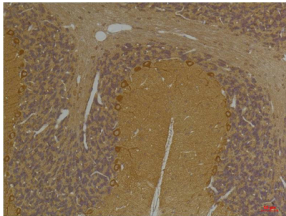
Recommended Dilution

WB: 1: 1000 - 1: 2000

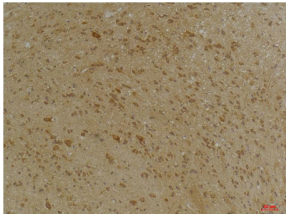
IHC: 1: 100 - 1: 200

Not yet tested in other applications.

Images



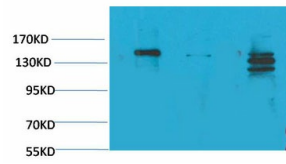
Immunohistochemical analysis of paraffin-embedded Rat Brain Tissue using SLC12A4 Rabbit pAb diluted at 1:200.



Immunohistochemical analysis of paraffin-embedded Mouse Brain Tissue using SLC12A4 Rabbit pAb diluted at 1:200.

1 2 3

Western blot analysis of 1) Rat Brain Tissue, 2) Mouse Brain Tissue, 3) HeLa with SLC12A4 Rabbit pAb diluted at 1:2,000.



Storage

-20°C for 1 year

501 Changsheng S Rd, Nanhu Dist, Jiaxing, Zhejiang, China

Tel: 86 21 31007137 | E-mail: save@bt-laboratory.com | www.bt-laboratory.com